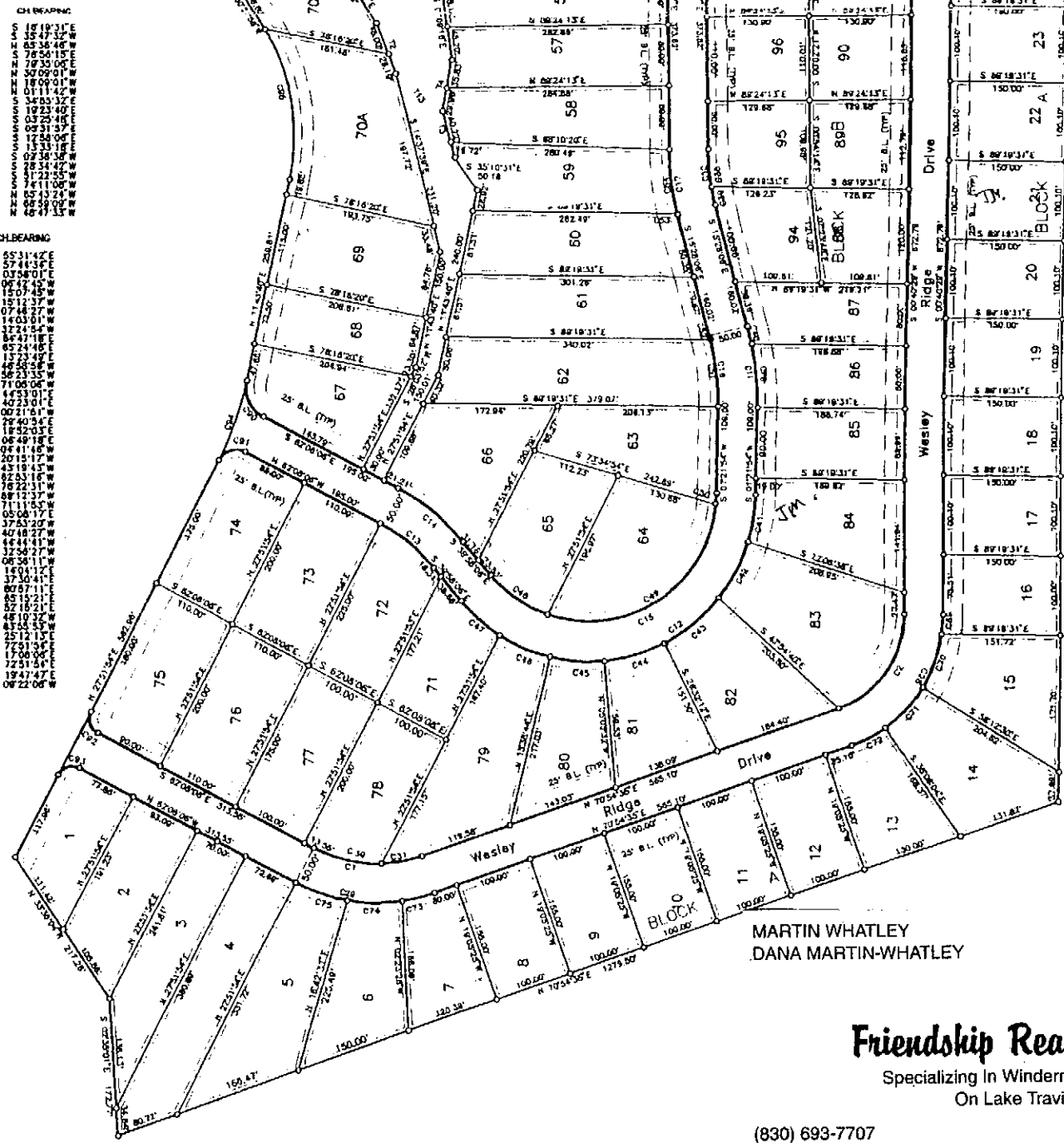


CURVE	RADIUS	LENGTH	DELTA	CHORD	CHL BEARING
C27	322.00'	161.68'	34.0000°	190.04'	N 15°19'31"E
C28	175.00'	114.52'	30°14'06"	201.31'	N 15°47'32"W
C29	225.00'	184.39'	46°57'19"	179.28'	N 05°36'46"W
C30	175.00'	80.42'	29°36'17"	88.42'	N 78°54'15"E
C31	175.00'	52.80'	17°21'02"	52.70'	N 73°33'06"E
C32	325.00'	24.84'	6°21'01"	24.82'	N 30°09'01"W
C33	325.00'	68.31'	17°59'00"	68.04'	N 18°09'01"W
C34	225.00'	65.85'	8°40'02"	63.84'	N 11°11'00"W
C35	225.00'	18.85'	4°48'03"	18.85'	N 34°53'32"E
C36	225.00'	103.13'	26°15'42"	102.23'	N 19°23'40"E
C37	225.00'	80.47'	8°40'02"	77.71'	N 13°33'36"E
C38	225.00'	22.48'	4°48'03"	21.25'	N 05°31'37"E
C39	225.00'	21.00'	4°39'30"	20.00'	N 12°54'00"E
C40	225.00'	71.71'	18°18'37"	71.71'	N 13°22'55"E
C41	225.00'	81.84'	19°48'37"	81.84'	N 13°22'55"E
C42	215.00'	80.47'	21°28'40"	80.00'	N 28°34'42"W
C43	215.00'	80.67'	21°09'46"	80.00'	N 21°22'55"W
C44	215.00'	80.47'	21°28'40"	80.00'	N 28°34'42"W
C45	215.00'	70.31'	18°44'19"	70.00'	N 08°58'09"W
C46	215.00'	70.31'	18°44'19"	70.00'	N 08°58'09"W
C47	215.00'	88.22'	17°36'53"	85.46'	N 46°47'13"W

CURVE	RADIUS	LENGTH	DELTA	CHORD	CHL BEARING
C48	165.00'	69.82'	31°07'12"	86.52'	S 55°11'42"E
C49	165.00'	294.71'	102°20'18"	257.00'	N 1°19'00"E
C50	165.00'	15.00'	5°12'36"	14.99'	N 07°54'01"E
C51	165.00'	86.00'	16°00'17"	83.71'	N 09°42'40"E
C52	165.00'	3.61'	0°40'43"	3.61'	N 15°12'57"W
C53	165.00'	8.83'	0°30'58"	8.83'	N 15°12'57"W
C54	165.00'	81.43'	14°21'21"	81.22'	N 07°44'27"W
C55	165.00'	82.18'	26°54'27"	81.43'	N 14°03'01"W
C56	165.00'	30.00'	9°46'20"	29.96'	N 17°33'54"E
C57	165.00'	31.62'	9°46'20"	31.00'	N 17°33'54"E
C58	165.00'	50.00'	63°22'03"	52.52'	N 65°24'45"E
C59	165.00'	33.48'	40°34'37"	34.79'	N 11°23'54"E
C60	165.00'	4.58'	0°37'01"	4.58'	N 11°23'54"E
C61	165.00'	184.71'	22°12'17"	183.08'	N 26°23'35"W
C62	165.00'	23.56'	3°10'42"	23.57'	N 71°00'05"W
C63	165.00'	31.81'	2°53'15"	31.80'	N 65°43'31"E
C64	1025.00'	109.40'	6°06'05"	108.35'	N 40°23'01"E
C65	325.00'	3.52'	0°37'15"	3.52'	N 00°21'51"E
C66	325.00'	41.34'	7°17'15"	41.31'	N 07°43'31"E
C67	325.00'	70.00'	11°20'26"	69.84'	N 11°52'03"E
C68	325.00'	78.00'	13°45'04"	77.81'	N 06°49'18"E
C69	325.00'	24.57'	8°02'35"	24.55'	N 04°41'45"E
C70	325.00'	70.48'	23°04'26"	70.00'	N 26°11'45"E
C71	325.00'	70.48'	23°04'26"	70.00'	N 26°11'45"E
C72	325.00'	49.00'	16°02'30"	48.84'	N 43°19'45"E
C73	325.00'	225.00'	90°00'00"	225.00'	N 62°53'16"W
C74	325.00'	70.48'	17°23'34"	70.00'	N 09°12'37"W
C75	325.00'	71.18'	16°07'37"	70.89'	N 11°11'53"W
C76	325.00'	80.59'	17°07'31"	80.11'	N 10°51'33"W
C77	325.00'	191.00'	10°17'18"	191.18'	N 37°53'20"W
C78	325.00'	80.17'	4°42'40"	80.15'	N 40°18'27"W
C79	325.00'	53.82'	3°09'47"	53.86'	N 44°44'47"W
C80	325.00'	48.73'	2°48'22"	48.80'	N 47°50'51"W
C81	325.00'	38.23'	2°34'17"	38.00'	N 06°30'11"W
C82	325.00'	40.91'	2°32'29"	40.83'	N 16°04'27"E
C83	325.00'	40.91'	2°32'29"	40.83'	N 16°04'27"E
C84	325.00'	40.91'	2°32'29"	40.83'	N 16°04'27"E
C85	325.00'	97.10'	17°50'10"	98.83'	N 08°43'21"E
C86	325.00'	73.07'	11°04'50"	72.95'	N 05°18'21"E
C87	325.00'	121.44'	15°29'15"	119.50'	N 04°15'53"W
C88	325.00'	23.84'	3°54'31"	23.84'	N 43°54'33"W
C89	325.00'	63.37'	7°50'40"	63.89'	N 25°12'15"E
C90	325.00'	39.22'	90°00'00"	39.22'	N 72°52'00"E
C91	325.00'	20.00'	90°00'00"	20.28'	N 17°00'00"E
C92	325.00'	31.42'	90°00'00"	28.28'	N 72°51'54"E
C93	325.00'	104.38'	16°06'15"	108.03'	N 19°47'47"E
C94	325.00'	191.00'	42°11'36"	192.87'	N 08°22'08"W

COURSE	BEARING	DISTANCE
T1	N 16°49'24"E	34.85'
T2	S 20°17'15"E	71.18'
T3	S 18°57'44"E	59.94'
T4	S 10°06'42"W	65.78'
T5	N 02°45'59"W	40.33'
T6	N 65°08'44"W	59.97'
T7	N 37°03'53"E	57.86'
T8	N 18°54'37"E	33.87'
T9	N 23°34'28"W	39.82'
T10	N 22°12'36"E	51.55'
T11	N 27°47'19"W	120.36'
T12	N 14°58'00"W	41.43'
T13	S 34°02'32"E	129.65'



MARTIN WHATLEY
DANA MARTIN-WHATLEY



Friendship Real Estate
Specializing In Windermere Oaks
On Lake Travis

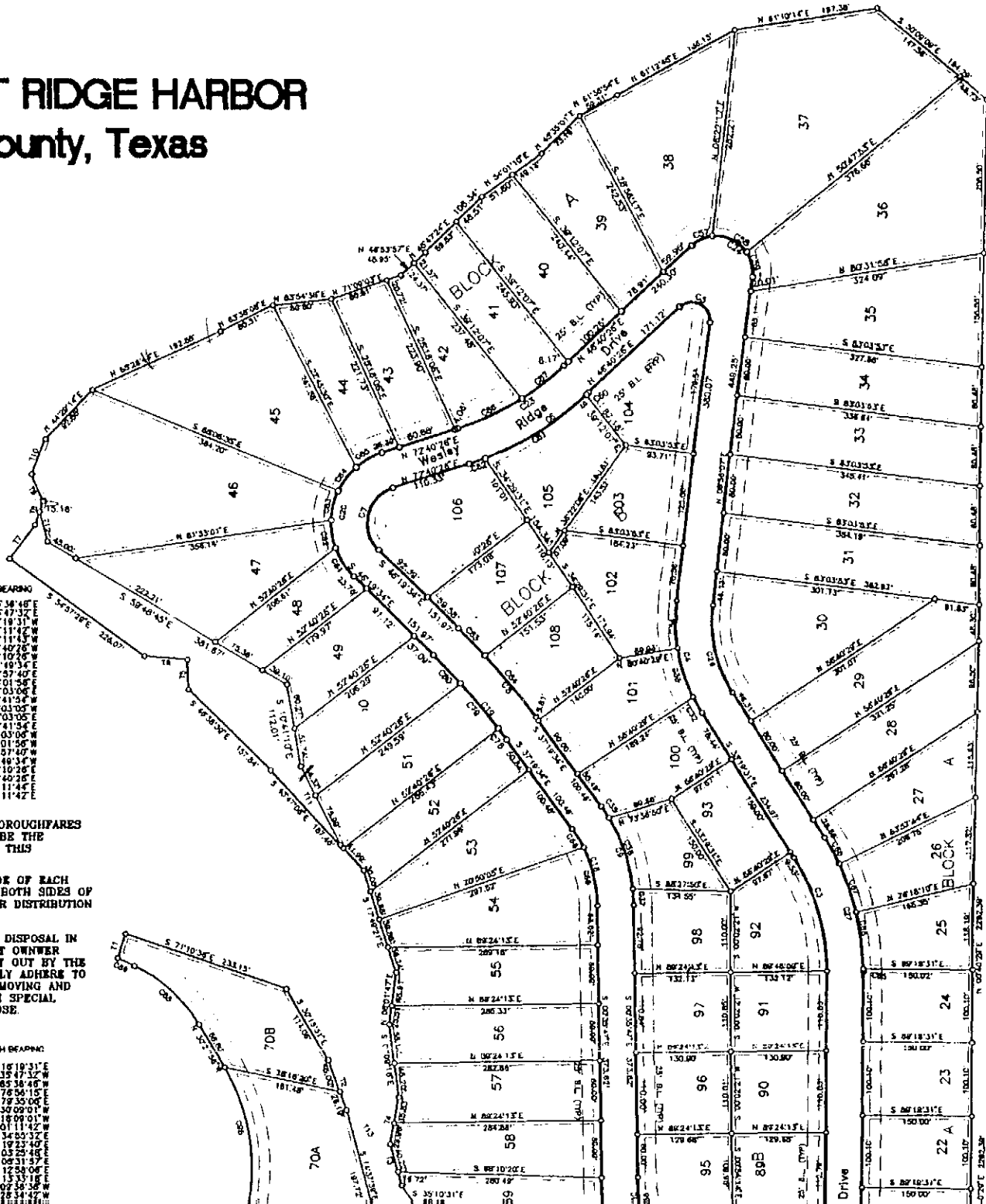
(830) 693-7707
(830) 693-4286 FAX
E-mail: friends@tstar.net
www.lakefriends.com

205 Coventry Road
Spicewood, Texas 78669

BLACKWELL LACKEY AND ASSOCIATES * AUSTIN

THE POINT AT RIDGE HARBOR

Burnet County, Texas



Legend
 ○ Iron pin set
 ⊗ Iron pin found
 - - - Building Line

CURVE	RADIUS	LENGTH	DELTA	CHORD	CH BEARING
C1	175.00'	143.47'	48°57'19"	139.44'	S 65°48'40" E
C2	175.00'	153.25'	50°14'06"	143.81'	S 55°47'32" E
C3	275.00'	103.19'	34°00'00"	100.80'	N 16°19'31" W
C4	225.00'	156.10'	40°13'34"	154.87'	N 17°11'42" W
C5	75.00'	81.20'	14°01'41"	47.02'	N 53°11'44" W
C6	425.00'	192.84'	28°00'00"	191.21'	S 62°40'26" W
C7	50.00'	103.85'	119°00'00"	44.16'	N 13°02'00" W
C8	1025.00'	181.01'	9°00'00"	180.84'	N 14°03'30" E
C9	225.00'	144.24'	38°13'47"	141.78'	N 18°57'40" E
C10	275.00'	71.38'	14°32'19"	71.18'	N 08°01'58" E
C11	353.00'	104.30'	18°50'00"	103.92'	N 07°03'04" E
C12	215.00'	520.34'	138°40'00"	402.33'	N 70°41'54" W
C13	225.00'	67.05'	22°09'58"	66.50'	N 51°03'05" W
C14	275.00'	104.39'	22°09'58"	105.73'	N 51°03'05" E
C15	185.00'	398.33'	138°40'00"	308.74'	N 70°41'54" E
C16	305.00'	88.81'	18°50'00"	88.28'	N 08°01'58" W
C17	325.00'	84.16'	14°52'15"	84.12'	N 08°01'58" W
C18	175.00'	112.18'	36°33'47"	110.27'	N 18°57'40" W
C19	975.00'	153.15'	9°00'00"	153.00'	N 41°48'34" W
C20	160.00'	207.69'	119°00'00"	172.33'	N 13°10'26" E
C21	375.00'	170.17'	28°09'00"	168.71'	N 08°40'26" E
C22	50.00'	122.40'	14°01'41"	84.05'	N 53°11'44" E
C23	175.00'	122.87'	40°15'34"	120.45'	N 17°11'42" E

MAINTENANCE OF ALL STREETS, ROADS AND THOROUGHFARES DELINEATED AND SHOWN ON THIS PLAT SHALL BE THE RESPONSIBILITY OF THE PROPERTY OWNERS OF THIS SUBDIVISION.

AN EASEMENT 5 FEET IN WIDTH ON EITHER SIDE OF EACH PROPERTY LINE AND AN EASEMENT OF 10' ON BOTH SIDES OF THE RIGHT-OF-WAY ARE HEREBY RETAINED FOR DISTRIBUTION LINES AND/OR UTILITIES.

PERTAINING TO GARBAGE AND WASTE MATERIAL DISPOSAL IN THIS SUBDIVISION, EACH LOT OWNER AND TRACT OWNER SHALL CONFORM TO THE REQUIREMENTS AS SET OUT BY THE STATE HEALTH DEPARTMENT AND SHALL STRICTLY ADHERE TO SUCH REGULATIONS AND REQUIREMENTS BY REMOVING AND DUMPING ON APPROVED GROUNDS OR THROUGH SPECIAL SERVICES SET UP BY OTHERS FOR THIS PURPOSE.

CURVE	RADIUS	LENGTH	DELTA	CHORD	CH BEARING
C27	325.00'	182.84'	34°00'00"	190.04'	S 16°19'31" E
C28	175.00'	214.52'	70°14'06"	201.34'	S 4°47'12" W
C29	225.00'	184.39'	46°57'19"	179.28'	S 85°38'48" W
C30	175.00'	178.00'	49°58'17"	186.42'	S 78°54'15" W
C31	175.00'	52.80'	17°21'02"	52.79'	N 79°35'00" E
C32	220.00'	24.84'	6°21'01"	24.82'	N 30°09'01" W
C33	225.00'	68.51'	17°50'00"	68.04'	N 18°09'01" W
C34	225.00'	63.85'	18°15'30"	63.84'	N 01°11'42" W
C35	225.00'	18.85'	4°48'03"	18.85'	S 34°53'32" E
C36	225.00'	103.13'	28°15'42"	102.23'	N 19°23'48" E
C37	225.00'	22.28'	5°40'02"	22.25'	N 18°09'01" W
C38	270.00'	47.38'	9°33'39"	47.33'	N 06°31'57" E
C39	275.00'	24.00'	4°59'58"	23.99'	N 25°58'06" E
C40	185.00'	33.71'	3°19'17"	33.71'	N 13°33'15" W
C41	215.00'	81.04'	16°24'26"	81.57'	N 07°56'58" W
C42	215.00'	80.47'	21°28'40"	80.00'	N 28°34'42" W